



Allegheny
Prenatal
To Three

Presentation Goals

- Share advantages of a prenatal to three system (particularly in the context of the federal budget landscape)
- Inspire systems building work in other counties or regions
- Provide suggested jumping off points to begin collaboration and coordination
- Offer technical assistance to follow up with deeper questions and collective brainstorming with our team





We envision communities where all families, from the prenatal stage through age three, have equitable access to the resources, services, and support necessary for healthy development, empowering them to thrive and reach their fullest potential.

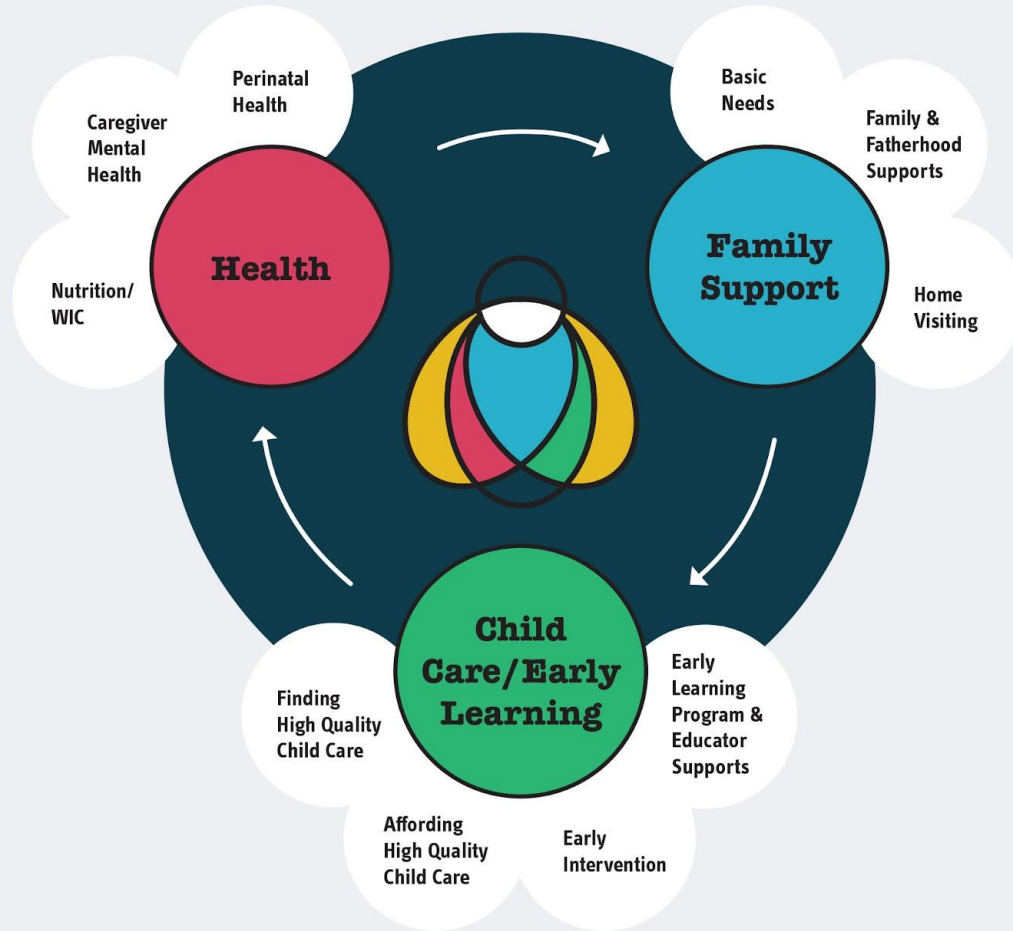


Allegany
Prenatal
To Three

Partners



Services



Anchors of our system:

The BIRTH Initiative
Hello Baby
Early Learning Resource Center

Shared principles:

Racial Equity
Data
Collaborations

How to Create Prenatal-3 Systems

- 1. Identify situations where relevant service providers, government and nonprofit officials, and other key community leaders already gather and collaborate and the projects and funding streams that bring them together.**
- 2. Identify the funding streams that support individual services for pregnant and new moms, infants or toddlers, and their families, and where flexibility exists in how to use the funds.**
- 3. Identify where to find key data about children and families.**
- 4. Determine how program providers seek and receive community feedback and incorporate it into their service delivery.**



How to Create Prenatal-3 Systems

1. Identify situations where relevant service providers, government and nonprofit officials, and other key community leaders already gather and collaborate and the projects and funding streams that bring them together.
2. Identify the funding streams that support individual services for pregnant and new moms, infants or toddlers, and their families, and where flexibility exists in how to use the funds.
3. Identify where to find key data about children and families.
4. Determine how program providers seek and receive community feedback and incorporate it into their service delivery.



Identify where we were coming together

Infant Mortality Commission

Project LAUNCH

National League of Cities

ELRC Region 5 Contract

Our Kids, Our Commitment Ballot Initiative

Childhood Begins at Home - statewide home visiting campaign

StartStrong PA - statewide child care campaign

StrongMomStrongBaby - connecting early intervention to moms with mental health diagnoses

Maternal Child Health Strategy Team

CityMATCH grant

Hello Baby

BIRTH Plan development and community engagement



How to Create Prenatal-3 Systems

1. Identify situations where relevant service providers, government and nonprofit officials, and other key community leaders already gather and collaborate and the projects and funding streams that bring them together.
2. Identify the funding streams that support individual services for pregnant and new moms, infants or toddlers, and their families, and where flexibility exists in how to use the funds.
3. Identify where to find key data about children and families.
4. Determine how program providers seek and receive community feedback and incorporate it into their service delivery.



Funding Streams

Maternal Child Health

Medicaid

CHIP

Title V Home visiting

MIECHV Home Visiting

Healthy Start Initiative

Early Head Start (home-based)

WIC and Breastfeeding support

Department of Drug and Alcohol Programs

Early Learning

Child Care Services / Child Care Assistance

Early Head Start Child Care Partnership

Head Start / HSSAP

Early Intervention Part C

Medicaid/CHIP

WIC

Home Visiting Services

Child and Adult Care Food Program (CACFP)

Child Welfare

Child Welfare prevention block grant



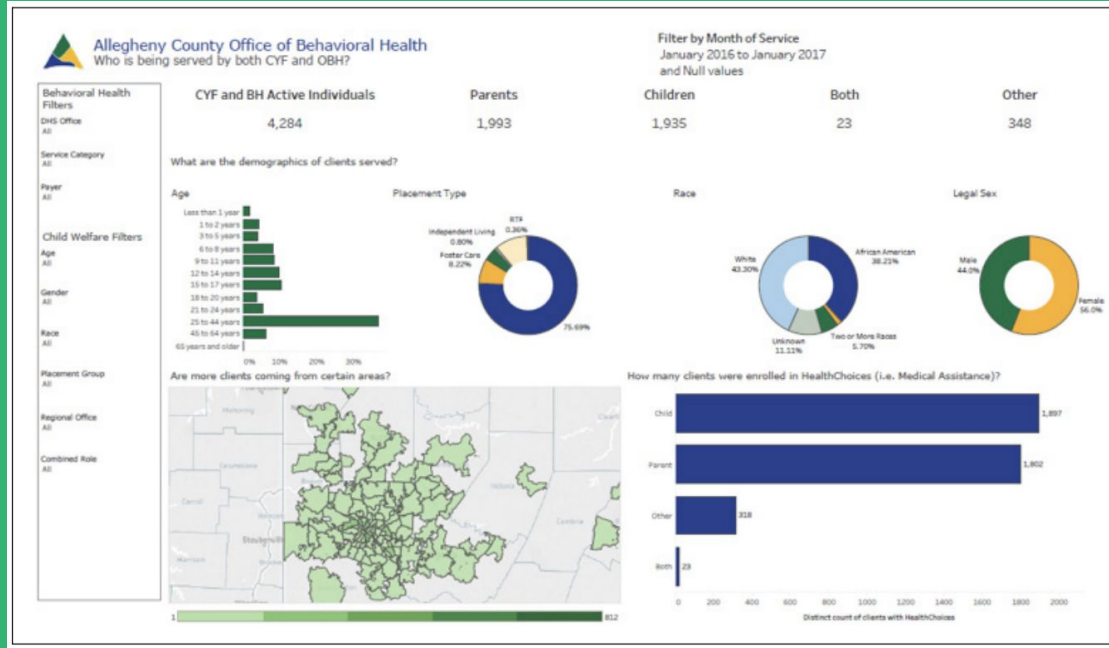
How to Create Prenatal-3 Systems

1. Identify situations where relevant service providers, government and nonprofit officials, and other key community leaders already gather and collaborate and the projects and funding streams that bring them together.
2. Identify the funding streams that support individual services for pregnant and new moms, infants or toddlers, and their families, and where flexibility exists in how to use the funds.
3. Identify where to find key data about children and families.
4. Determine how program providers seek and receive community feedback and incorporate it into their service delivery.



Data Sources

Allegheny County Data Warehouse: <https://quickcount.alleghenycounty.us/>



Allegheny
Prenatal
To Three

How to Create Prenatal-3 Systems

1. Identify situations where relevant service providers, government and nonprofit officials, and other key community leaders already gather and collaborate and the projects and funding streams that bring them together.
2. Identify the funding streams that support individual services for pregnant and new moms, infants or toddlers, and their families, and where flexibility exists in how to use the funds.
3. Identify where to find key data about children and families.
4. Determine how program providers seek and receive community feedback and incorporate it into their service delivery.



Community Feedback

Department of Human Services / Hello Baby
Community Advisory Board
Family Council

Healthy Start Inc. Pittsburgh / BIRTH Plan
Community Consortia
Community Health Advocates

Trying Together / ELRC
Provider Advisory Council *statewide
Director Roundtables
Local Leadership Council



Allegheny
Prenatal
To Three

Why Systems Building Now?

- Braiding funding can stretch limited resources, diffuse system creates greater protection from cuts
- Creating data systems or coordinate technology
- Creating processes for community engagement and feedback
- Engaging private and nonprofit partners can engage public policy and advocacy opportunities



Questions?

We want to connect!

**Lissa Geiger Shulman
Allegheny Prenatal to Three Director
lissa@tryingtogether.org**



Allegheny
Prenatal
To Three