



IMPACT REPORT

SEPTEMBER 2025



TABLE OF CONTENTS

- 3** Improving Pennsylvania
- 4** Board & Staff
- 6** Statewide Programs
- 7** Annual Conference
- 8** Members by Region Map
- 10** A Statistical Snapshot
- 11** Member Value Add Services
- 12** Action Teams
- 14** PA Giving Pledge
- 15** PACFA By the Numbers



Improving PENNSYLVANIA

Every day, a strong network of locally based, and locally governed, community foundations are working with donors, nonprofits, professional advisors, elected officials, businesses and other civic leadership organizations to improve Pennsylvania.

Our nearly 40 members touch, and serve, every region on Pennsylvania. They are connecting donors with causes they care about, they are carefully evaluating local needs and funding high priority projects, they are helping professional advisors with philanthropic planning, and they are collaborating with a wide variety partners to identify and address the most pressing priorities of their regions.

Increasingly, Pennsylvania community foundations are also working together to address needs in the Commonwealth, at scale. We've developed the PA Giving Pledge, a collective marketing plan to encourage donors to leave at least 5% of their estates to help future generations of Pennsylvanians. If successful, this could create \$21 billion of permanent philanthropic capital and quadruple the assets

and annual grantmaking ability of Pennsylvania community foundations.

Our Action Teams are successfully influencing public policy. We've helped make major changes in how scholarship funds operate and how affordable housing funds are allocated.

We are currently engaged in important work to keep assets local, charitable and permanent by inserting a local community foundation as the default option, replacing the General Fund, when a resident dies intestate. PACFA members are also advocating to reduce housing instability by limiting access to eviction notices. Others are working to identify and spread early childhood best practices and systems reform.

Collectively, our members manage nearly \$5 billion of philanthropic assets. The Pennsylvania Community Foundation Association (PACFA) invites you to learn more about the work of these outstanding philanthropic institutions. They are here to serve, they are here for good, and they are here **forever**.



A handwritten signature in white ink on a dark blue background.

Michael Batchelor
President



A handwritten signature in white ink on a dark blue background.

Phil Koch
Board Chair

Pennsylvania Community Foundation Association

BOARD & STAFF



Board Chair

Phil Koch

Vice President of Policy & Community Impact,
The Pittsburgh Foundation



Vice Chair

**Erika Riddle
Petrozelli**

President & CEO, Lehigh Valley
Community Foundation



Karen Bilowith

President & CEO,
The Erie Community Foundation



Sophie Bryan

Director of External Affairs and
Civic Initiatives,
Philadelphia Foundation



Rynne Jennings

President & CEO,
Wayne County
Community Foundation



Jennifer Wilson

President & CEO,
First Community Foundation
Partnership of PA

PACFA is governed by a board of trustees selected to insure member representation. Trustees serve staggered and renewable three-year terms. PACFA is led by a President and CEO, with important support and administrative service provided by The Nonprofit Partnership in Erie, PA.



Treasurer

Trenton Moulin

Executive Director,
Bridge Builders
Community Foundation



Secretary

Jodi Cessna

Chief Executive Officer,
Central Pennsylvania
Community Foundation



Amanda Campbell

President & CEO,
Schuylkill Area
Community Foundation



Tracy Cutler

Executive Vice President,
Lancaster County Community
Foundation



President & CEO

Michael Batchelor

Pennsylvania Community
Foundation Association

With administrative support from



Statewide PROGRAMS

The mission of PACFA is to help our members connect, learn and act collectively. We do this to make Pennsylvania better for all of us.

We offer our members a broad range of educational webinars, along with a popular New Staff Training Academy and an Annual Conference. Our CEO Summit connects top elected officials and public policy leadership with our membership. In addition, we provide on-site member visits and Action Team support. Increasingly, our work includes partnering with other state and national Philanthropic Infrastructure Organizations to amplify their messages and bring additional services to the Commonwealth. New in 2025 are Learning Cohorts focused on Newer CEO Training, Asset Development, Public Policy, and Impact Investing.

COMMUNITY LEADERSHIP IN 2025: A COMMUNITY FOUNDATION SUMMIT



NEW STAFF TRAINING ACADEMIES PITTSBURGH & LANCASTER



SAMPLE WEBINARS

Building Donor Trust: Benchmarking Investment Practices and Stewardship

Matthew Schonland, Fund Evaluation Group

Partnering with Professional Advisors: Growing Your Foundation's Assets through Strategic Philanthropy

Lou Teti, Stevens & Lee

Washington Update: 2025 Legislative Changes and DAF Regulations

Jeff Hamond, Van Scoyoc Associates

Community Engagement: A Look Into Departmental Work and Upcoming Outreach

Philip Jones, Philadelphia Federal Reserve Bank

Early Childhood Education Action Team: Strengthening Early Childhood Supports in PA

Led by various PACFA members

Members Gathering

ANNUAL CONFERENCE

PACFA annually plans and hosts a state-wide conference that draws nearly 125 members from virtually every community foundation in Pennsylvania. Interest in the conference is steadily increasing among community foundations in neighboring states. The event features national thought leadership presenters paired with practical workshops on how to enhance community foundation impact, effectiveness, and efficiency.

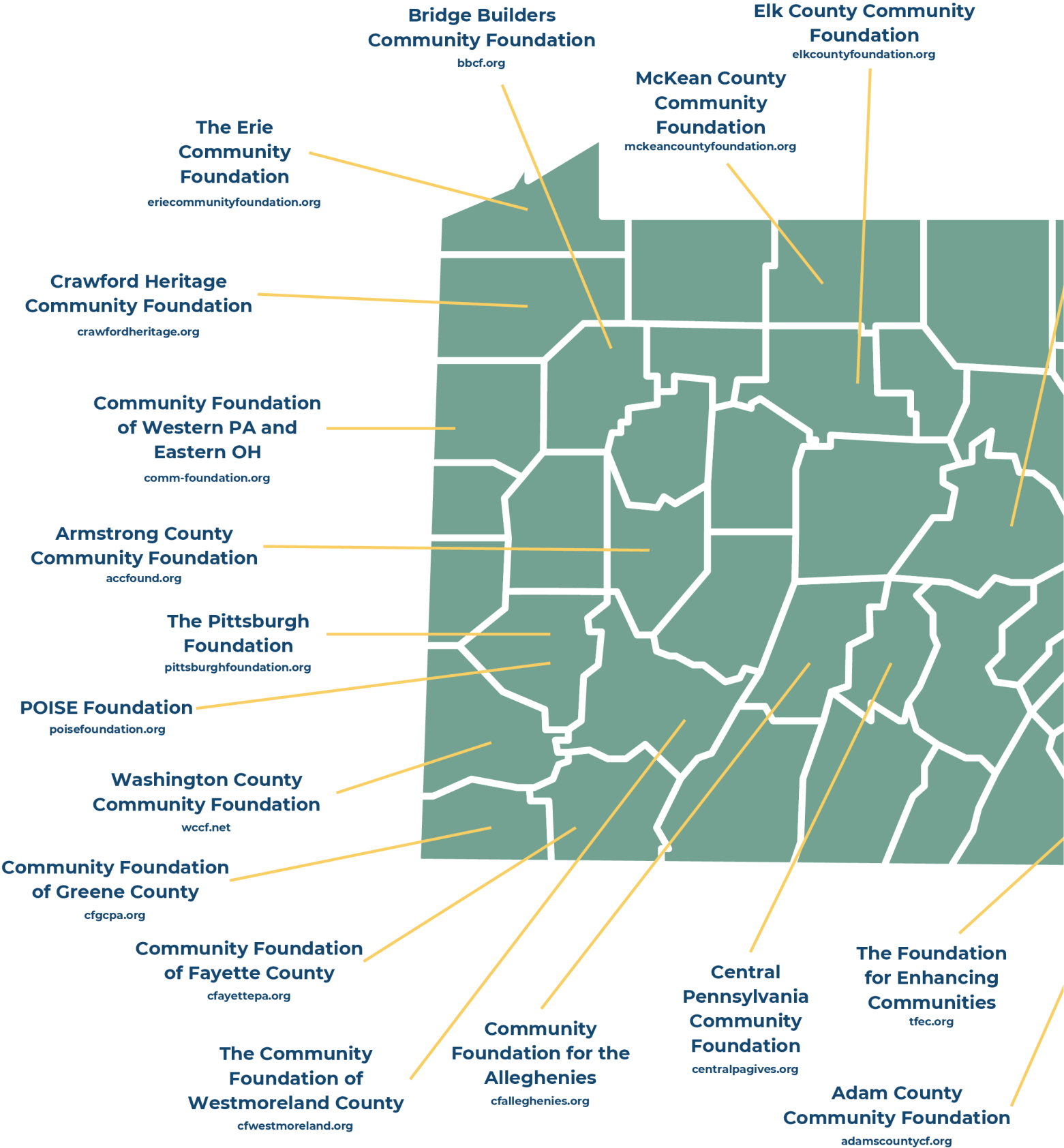
Attendees also take advantage of technology User Groups, intensive Learning Cohorts and invaluable networking opportunities. Thanks to an impressive array of conference sponsors, registration is available at a modest cost.



TOGETHER AGAIN
2022



MEMBERS BY REGION



Centre Foundation
centre-foundation.org

**First Community
Foundation
Partnership of PA**
fcfpartnership.org

**Clinton County
Community
Foundation**
clintoncountyfoundation.org

**Community
Foundation for
the Twin Tiers**
twintierscf.org

**Community
Foundation of the
Endless Mountains**
community-foundation.org

**Wayne County
Community
Foundation**
waynefoundation.org

**Greater Pike
Community
Foundation**
greaterpike.org

**Scranton Area
Community
Foundation**
safdn.org

**The Luzerne
Foundation**
luzfdn.org

**Community Giving
Foundation**
csgiving.org

**Community
Foundation of
Monroe County**
cfmcpa.org

**Schuylkill Area
Community
Foundation**
sacfoundation.com

**Lehigh Valley
Community
Foundation**
lvcfoundation.org

**Bucks County
Foundation**
buckscountyfoundation.org

**Pottstown Regional
Community Foundation**
pottstownfoundation.org

**The Philadelphia
Foundation**
philafound.org

**The Community's
Foundation**
tcfrichmond.org

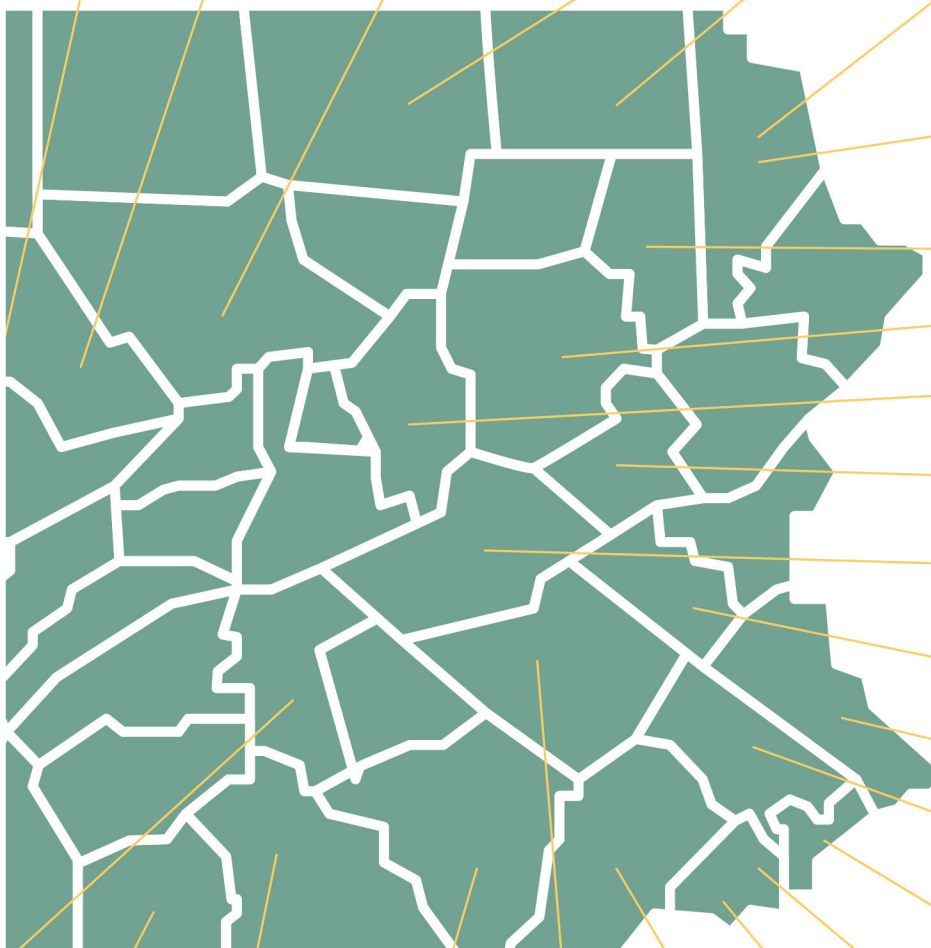
**The Foundation for
Delaware County**
delcofoundation.org

**Chester County
Community
Foundation**
chescof.org

**Berks County
Community
Foundation**
bccf.org

**Lancaster County
Community
Foundation**
lancfound.org

**York County
Community
Foundation**
yccf.org

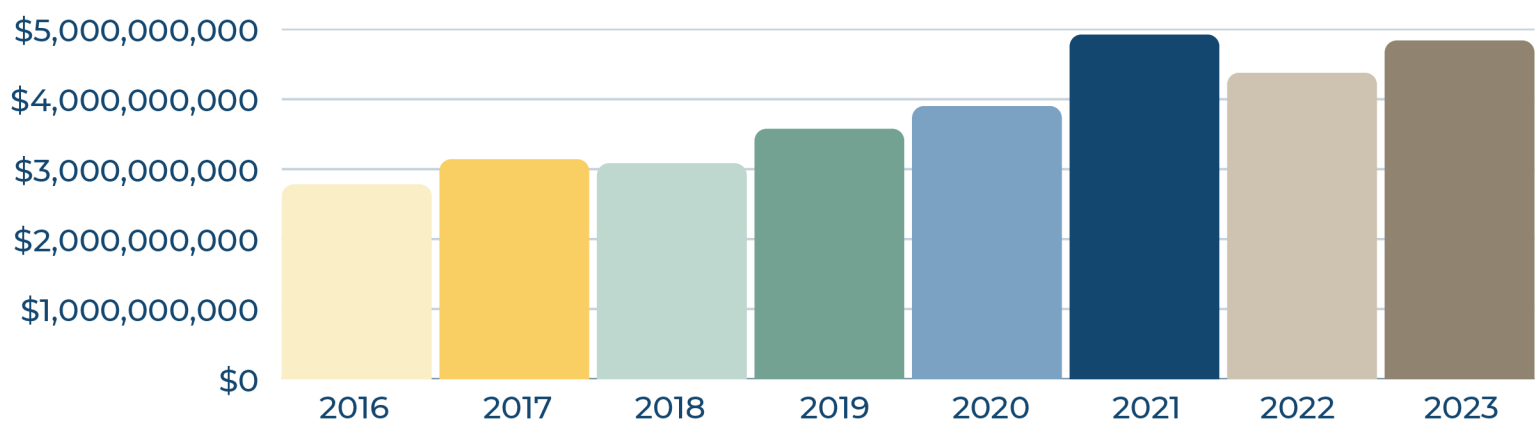


A STATISTICAL SNAPSHOT

study conducted by the Community Foundation Research and Training Institute

Community foundations are recognized as one of the nation’s fastest growing forms of philanthropy. From 2018 to 2023, total assets of our members grew nearly 60%, and this is **after** distributing hundreds of millions each year to deserving nonprofits and scholarship recipients.

Assets of All Pennsylvania Community Foundations



The three largest community foundations in the Commonwealth are Pittsburgh, Philadelphia and Erie. There are a dozen PACFA members with assets in excess of \$100 million, or more.



All members, regardless of size, are connecting donors to causes they care about, growing permanent philanthropic assets, carefully evaluating and addressing local needs and collaborating on community leadership priorities.

MEMBER VALUE ADD SERVICES

The core business of community foundations is to build permanent endowment funds for the regions they serve. Most community foundations also offer a range of important community leadership, donor education and other services for the professional advisors and local nonprofits.

GIVING DAYS

Several PACFA members host individual, or regional, Giving Days to encourage outright gifts from the general public. These popular events raise millions of dollars to benefit literally thousands of nonprofits across the Commonwealth, typically through on-line donations made during a limited time period.



NONPROFIT CAPACITY BUILDING

Most PACFA members offer services to nonprofits beyond grantmaking. They support and partner with nonprofits through capacity building projects and services. These educational programs increase the effectiveness and impact of philanthropic grants and donor gifts.



AFFINITY GROUPS

Another priority for Pennsylvania community foundations is to ensure philanthropy is supported by, and accessible to, all. Women's Funds, Young Donor Groups, LGBT Funds, Giving Circles and other affinity funds are growing forces for good in communities throughout the Commonwealth. Many PACFA members also often create and manage geographic funds for smaller communities unable to support their own, independent, community foundations.



Public Policy Update

ACTION TEAMS

The PACFA theory of change is to support multiple groups of individual community foundations as they partner to build coalitions to address specific topical priorities, as selected by members.

PACFA, itself, does not intend to pursue collective legislation or advance a public policy agenda unless issues arise that impact the community foundation business model and our ability to operate efficiently and effectively.

Since our re-launch in 2021, PACFA has had an impressive array of public policy wins. Recent Action Team successes include:



Affordable Housing

The Pennsylvania Home Financing Agency administers the Pennsylvania Housing Affordability and Rehabilitation Enhancement Fund (PHARE). At the beginning of the 2021-2022 legislative session, the PHARE Fund was capped at \$40,000,000 annually.

A PACFA Action Team led by The Pittsburgh Foundation successfully worked with a coalition of community foundations and housing providers to increase PHARE funding from \$40,000,000 to \$60,000,000 annually. Additionally, a one-time distribution of \$100,000,000 was transferred to the PHARE Fund from remaining American Rescue Plan funds. Plans are also in place to increase PHARE support by \$10,000,000 each year until it reached \$100,000,000.



Scholarship Displacement

A strong coalition of community foundations, led by Ralph Serpe, President and CEO of Adams County Community Foundation, helped Pennsylvania become the fourth state in the nation to eliminate scholarship displacement in public colleges and universities.

This Action Team, with a strong assist from Miss Teen Pennsylvania Scholarship Foundation, helped educate elected officials on scholarship displacement. Going forward, donors and scholarship providers, including most community foundations, can take comfort in the knowledge that the awards they make will not reduce an existing financial aid package.



Telemedicine

An impressive coalition of 140 organizations, including nearly 20 community foundations, successfully supported legislation that defined telemedicine, offered guidelines on who can provide telemedicine services and provided clarity around insurance reimbursements.

Passage of this legislation is recognized as an exceptional step in expanding access to critical and quality health care. Thanks to the staff at The Pittsburgh Foundation for leading this important PACFA Action Team.



Intestate Succession

PACFA support, with an important assist from local Registers of Wills, encouraged the PA House Judiciary Committee to approve, by a 26 – 0 vote, legislation to insert a local community foundation as the default option, replacing the General Fund, when a Pennsylvania resident dies intestate.

Successful passage will, in effect, eliminate a 100% tax on these assets. It will also insure they remain local, permanent and charitable. A final vote on this legislation is currently scheduled for September 22, 2025. Thanks again for Ralph Serpe for leading this Action Team.



Early Childhood

Angie Berzonski from Community Foundations for the Alleghenies and Meghan Briggs from Lehigh Valley Community Foundation are leading the PACFA Early Childhood Action Team. They are currently focused on supporting and spreading early childhood best practices. Legislation to strengthen the early childcare workforce teacher retention is also being supported.

PACFA does reserve the right to pursue a collective legislative or public policy agenda should issues arise that impact the ability of community foundations to operate efficiently and effectively. Any Action Team(s) related to these topics will only be established after review by PACFA board and upon approval of at least two thirds of membership.

PA GIVING PLEDGE

a project of the Pennsylvania Community Foundation Association

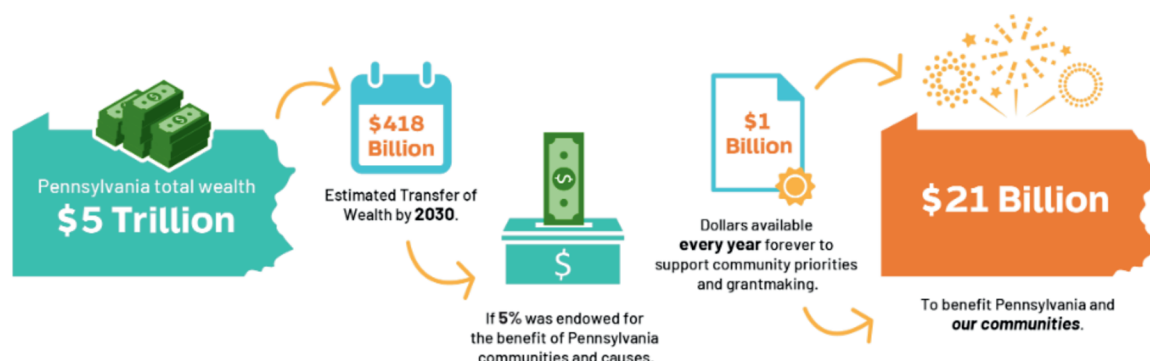
A recent Transfer of Wealth Study prepared by The Center for Rural Pennsylvania estimates \$418 billion will be transferred from one generation to the next in the coming decade. If Pennsylvania residents used just 5% of this wealth to create charitable endowments within community foundations, over \$1 billion in funds would be available every year to support local grantmaking and community priorities.

To encourage this, PACFA created the PA Giving Pledge.

MAKE A LASTING IMPACT

Leave 5% to do good.

The PA Giving Pledge, a project of The Pennsylvania Community Foundation Association, encourages Pennsylvanians to pledge 5% of their wealth to support our nonprofit sector and create impactful changes in communities throughout the state.



Graphic created by Tungsten Creative Group



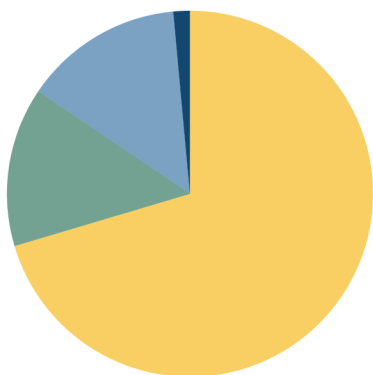
Do good in Pennsylvania.
Take the pledge and learn how your community foundation can get involved at **PAGivingPledge.org**.

BY THE NUMBERS

PACFA Financials

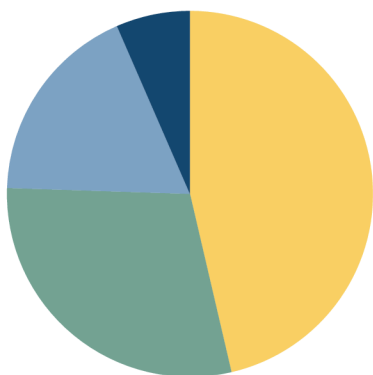
PACFA is a dues paying organization, supported by our membership. We are governed by an elected board and led by CEO, Michael Batchelor who previously had a 31-year career leading The Erie Community Foundation.

PACFA is financially solid and enthusiastically supported, primarily, through member dues. Dues have remained constant since our re-launch as a state-wide membership organization in 2021.



Revenue

Member Dues	\$170,000
Conference	\$34,000
Sponsorships	\$34,000
Investments	\$3,500
Total	\$241,500



Expenses

Salaries and Benefits	\$106,500
Travel, Meetings and Conferences	\$67,000
Support and Contract Services	\$41,250
Programming	\$15,000
Total	\$229,750

This is PACFA.

The Pennsylvania Community Foundation Association (PACFA) is a member-based network of individual community foundations. All are working to improve the quality of life in the regions they serve. They are growing permanent endowed funds, identifying and addressing community needs, educating donors and professional advisors, building nonprofit capacity and serving as community leadership organizations.

The mission of PACFA is to help our members connect, learn and, where appropriate, act collectively.



**PENNSYLVANIA
COMMUNITY
FOUNDATION
ASSOCIATION**

609 Walnut St, 2nd Floor Erie, PA 16502
pacfapartners.org